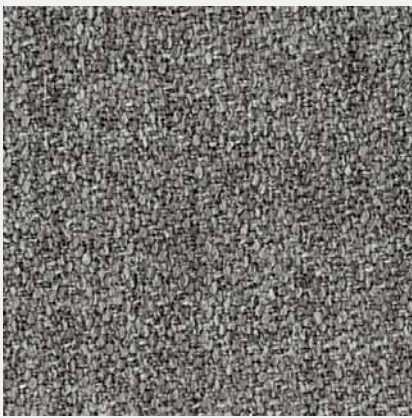


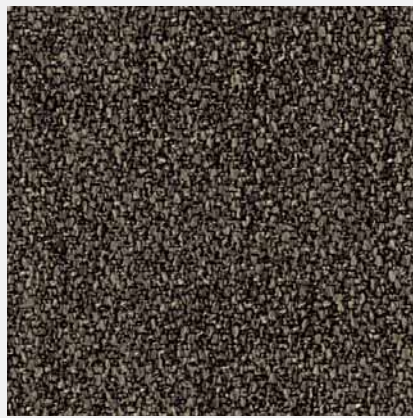
# ELEGANCE 01



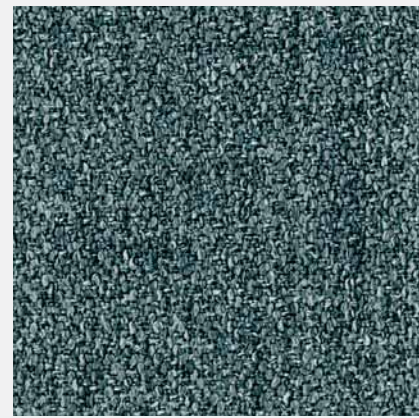
01



02



03



04



05



06

## TECHNICAL DETAILS

**COMPOSITION**  
100% POLYESTER (PL)

**COLOUR FASTNESS TO DRY CROCKING**  
UNI EN ISO 105 X 12  
4 / 5

**COLOUR FASTNESS TO WET CROCKING**  
UNI EN ISO 105 X 12  
4

**COLOUR FASTNESS TO LIGHT**  
ISO 105 B 02  
5

**PILLING**  
ISO 12945-2  
4 / 5

**ABRASION RESISTANCE**  
ISO 12947-2  
CYCLES 51.000

**COMPOSIZIONE**  
100% POLIESTERE (PL)

**SOLIDITÀ ALLO SFREGAMENTO A SECCO**  
UNI EN ISO 105 X 12  
4 / 5

**SOLIDITÀ ALLO SFREGAMENTO UMIDO**  
UNI EN ISO 105 X 12  
4

**SOLIDITÀ COLORI ALLA LUCE**  
ISO 105 B 02  
5

**PILLING**  
ISO 12945-2  
3 / 4

**RESISTENZA ALLA ABRASIONE MARTINDALE**  
ISO 12947-2  
CICLI 51.000

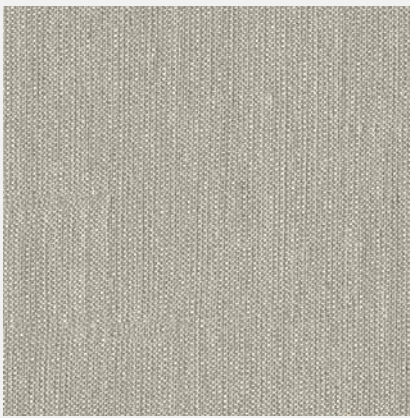
# BELMONT

CONTEMPORARY BOX SPRING BEDS

# ELEGANCE 02



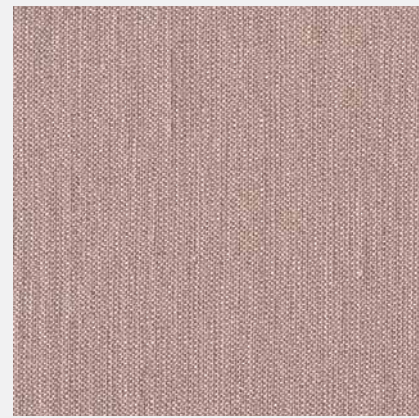
01



02



03



04



05



06



07

## TECHNICAL DETAILS

**COMPOSITION**  
40% COTTON (CO)  
38% LINEN (LI)  
22% POLYAMIDE (PA)

**COLOUR FASTNESS TO DRY CROCKING**  
UNI EN ISO 105 X 12  
4 / 5

**COLOUR FASTNESS TO WET CROCKING**  
UNI EN ISO 105 X 12  
3 / 4

**COLOUR FASTNESS TO LIGHT**  
ISO 105 B 02  
5

**PILLING**  
ISO 12945-2  
4

**ABRASION RESISTANCE**  
ISO 12947-2  
CYCLES 18.000

**COMPOSIZIONE**  
40% COTONE (CO)  
38% LINO (LI)  
22% POLIAMMIDE (PA)

**SOLIDITÀ ALLO SFREGAMENTO A SECCO**  
UNI EN ISO 105 X 12  
4 / 5

**SOLIDITÀ ALLO SFREGAMENTO UMIDO**  
UNI EN ISO 105 X 12  
3 / 4

**SOLIDITÀ COLORI ALLA LUCE**  
ISO 105 B 02  
5

**PILLING**  
ISO 12945-2  
4

**RESISTENZA ALLA ABRASIONE MARTINDALE**  
ISO 12947-2  
CICLI 18.000

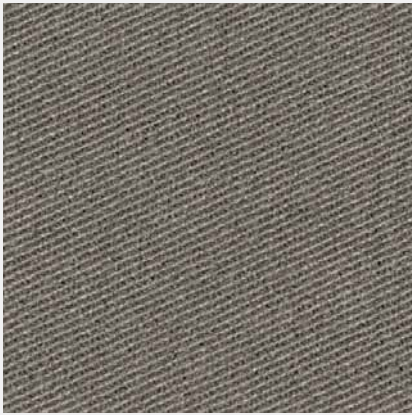
**BELMONT**

CONTEMPORARY BOX SPRING BEDS

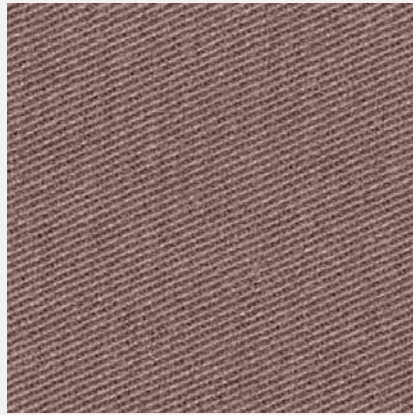
# ELEGANCE 03



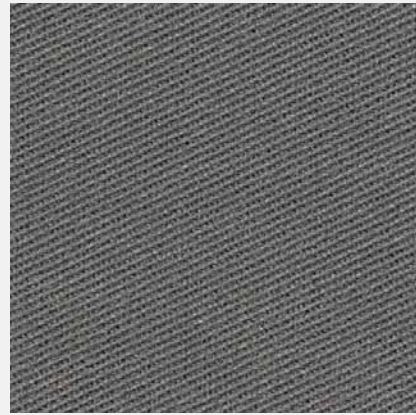
01



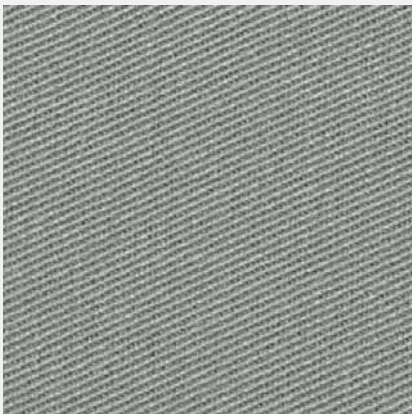
02



03



04



05



06

## TECHNICAL DETAILS

**COMPOSITION**  
100% COTTON (CO)

**COLOUR FASTNESS TO DRY CROCKING**  
UNI EN ISO 105 X 12  
3 / 4

**COLOUR FASTNESS TO WET CROCKING**  
UNI EN ISO 105 X 12  
3 MEDIUM  
2 / 3 DARK

**COLOUR FASTNESS TO LIGHT**  
ISO 105 B 02  
4 / 5

**PILLING**  
ISO 12945-2  
4

**ABRASION RESISTANCE**  
ISO 12947-2  
CYCLES 20.000

**COMPOSIZIONE**  
100% COTONE (CO)

**SOLIDITÀ ALLO SFREGAMENTO A SECCO**  
UNI EN ISO 105 X 12  
3 / 4

**SOLIDITÀ ALLO SFREGAMENTO UMIDO**  
UNI EN ISO 105 X 12  
3 MEDIUM  
2 / 3 DARK

**SOLIDITÀ COLORI ALLA LUCE**  
ISO 105 B 02  
4 / 5

**PILLING**  
ISO 12945-2  
4

**RESISTENZA ALLA ABRASIONE MARTINDALE**  
ISO 12947-2  
CICLI 20.000

# BELMONT

CONTEMPORARY BOX SPRING BEDS